

Intraductal Papillary Mucinous Neoplasm of the Pancreas Presenting as Worsening Hyperglycemia in a 72-Year-Old Patient with Type 2 Diabetes

Yotsapon Thewjitcharoen,¹ Nopparath Tongpoo,¹ Veekij Veerasomboonsin,²
 Soontaree Nakasatien,¹ Thep Himathongkam¹

¹THEPTARIN Diabetes, Thyroid and Endocrine Center, Vimut-Theptarin Hospital, Bangkok, Thailand

²Department of Radiology, Vimut-Theptarin Hospital, Bangkok, Thailand

Key words: intraductal papillary mucinous neoplasm (IPMN), worsening glycaemic control, first manifestation

Pancreatic cysts are common findings encountered and increasingly detected through cross-sectional imaging. Intraductal papillary mucinous neoplasm (IPMN) is the most common pancreatic cystic neoplasms and may be macroscopic precursor of pancreatic ductal adenocarcinoma.¹ New-onset diabetes or worsening glycaemic control may serve as clinical clues to underlying pancreatic neoplasia.² We present an interesting case of worsening glycaemic control in a patient with long-standing type 2 diabetes (T2D) as the first manifestation of IPMN with high-grade dysplasia.

A 72-year-old Thai male with well-controlled T2DM for 25 years presented with increase in glycated hemoglobin from 6.9% to 8.5% over 3 months, without other accompanying symptoms. He had regular follow-ups every 3-4 months and his glycaemic control had never exceeded 7.5% in the past 10 years. His current medications included metformin 2,000 mg per day and simvastatin 20 mg per day. There was no history of new medications or herbal supplements that could contribute to hyperglycemia. To evaluate for occult malignancies, abdominal ultrasonography was performed, revealing a 1.0-cm cystic lesion in the body of the pancreas with diffuse pancreatic ductal dilatation. IPMN with high-risk features (solid component

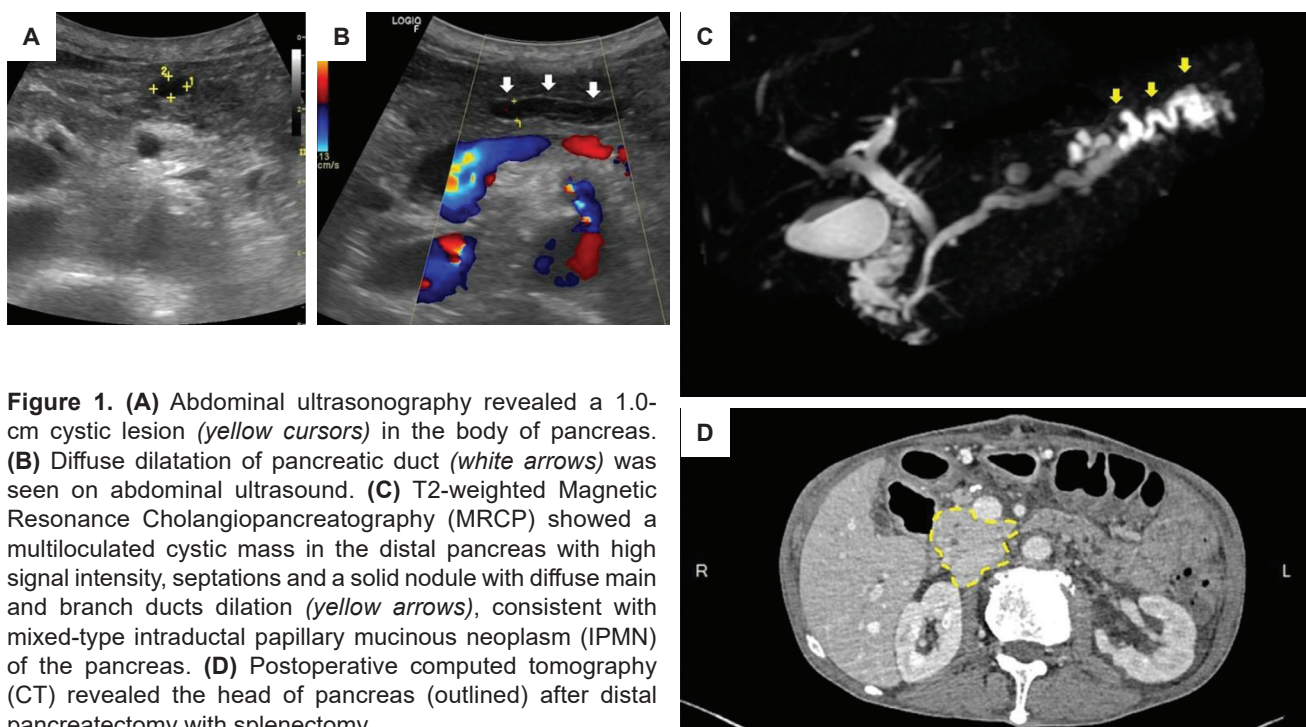


Figure 1. (A) Abdominal ultrasonography revealed a 1.0-cm cystic lesion (yellow cursors) in the body of pancreas. (B) Diffuse dilatation of pancreatic duct (white arrows) was seen on abdominal ultrasound. (C) T2-weighted Magnetic Resonance Cholangiopancreatography (MRCP) showed a multiloculated cystic mass in the distal pancreas with high signal intensity, septations and a solid nodule with diffuse main and branch ducts dilation (yellow arrows), consistent with mixed-type intraductal papillary mucinous neoplasm (IPMN) of the pancreas. (D) Postoperative computed tomography (CT) revealed the head of pancreas (outlined) after distal pancreatectomy with splenectomy.

eISSN 2308-118x (Online)
 Printed in the Philippines
 Copyright © 2026 by Thewjitcharoen et al.
 Received: July 1, 2025. Accepted: August 14, 2025.
 Published online first: April 12, 2026.
<https://doi.org/10.15605/jafes.041.01.5251>

Corresponding author: Yotsapon Thewjitcharoen, MD
 Theptarin Diabetes, Thyroid and Endocrine Center, Vimut-Theptarin Hospital,
 3850 Rama IV Road, Phra Khanong, Khlong Toei, Bangkok 10110, Thailand
 Tel No.: 066-02-348-7000
 E-mail: kamijoa@hotmail.com
 ORCID: <https://orcid.org/0000-0002-2317-4041>

with internal enhancing septation) was confirmed from T2-weighted Magnetic Resonance Cholangiopancreatography (MRCP) and endoscopic ultrasound (EUS). High amylase and lipase levels in the cystic fluid from presumed side branch cysts suggested continuity with the pancreatic main duct. Subsequently, distal pancreatectomy with splenectomy was performed following shared decision making with the patient. Histologic examination revealed high-grade dysplasia of gastric-type IPMN spreading into the main and branch pancreatic ducts, confirming a diagnosis of mixed-type IPMN with high-grade dysplasia. The patient's post-operative recovery was uneventful, and follow-up imaging was unremarkable. One year later, the patient remains well and is maintained on twice daily insulin treatments.

This case highlights the importance of recognizing worsening glycemic control or new-onset diabetes as potential early indicators of IPMN. Although the pathophysiology of diabetes in IPMN is not fully understood, pancreatic neoplasia has been associated with insulin resistance, possibly through paraneoplastic mechanisms involving altered glycogen synthase and phosphorylase activity.² This association is supported by a recent study utilizing MRI-based pancreatic cancer screening in patients with new-onset or worsening diabetes.³ In conclusion, although rare, IPMN should be considered in the differential diagnosis of unexplained worsening glycemic control. Non-invasive imaging modalities such as abdominal ultrasonography should be employed to detect potential underlying malignancies.

Ethical Consideration

Patient consent was obtained before submission of the manuscript.

Statement of Authorship

All authors certified fulfillment of ICMJE authorship criteria.

CRedit Author Statement

YT: Conceptualization, Methodology, Writing – original draft preparation; NT: Investigation; VV: Resources, Visualization; SN: Project administration; TH: Writing – review and editing, Supervision.

Data Availability Statement

No datasets were generated or analyzed for this research.

Author Disclosure

The authors declared no conflict of interest.

Funding Source

None.

References

1. Gonda TA, Cahen DL, Farrell JJ. Pancreatic Cysts. *N Engl J Med*. 2024;391(9):832-43. PMID: 39231345 DOI: 10.1056/NEJMra2309041
2. Liu J, Knezetic JA, Strömmer L, Permert J, Larsson J, Adrian TE. The intracellular mechanism of insulin resistance in pancreatic cancer patients. *J Clin Endocrinol Metab*. 2000;85(3):1232-8. PMID: 10720068 DOI: 10.1210/jcem.85.3.6400
3. Frank RC, Shim B, Lo T, et al. Pancreatic cancer screening in new-onset and deteriorating diabetes: Preliminary results from the PANDOME study. *J Clin Endocrinol Metab*. 2025;111(1):e148-55. PMID: 40439123 PMID: PMC12712999 DOI: 10.1210/clinem/dgaf319

Authors are required to accomplish, sign and submit scanned copies of the JAFES Author Form consisting of: (1) Authorship Certification, that authors contributed substantially to the work, that the manuscript has been read and approved by all authors, and that the requirements for authorship have been met by each author; (2) the Author Declaration, that the article represents original material that is not being considered for publication or has not been published or accepted for publication elsewhere, that the article does not infringe or violate any copyrights or intellectual property rights; that no references have been made to predatory/suspected predatory journals; and that use of artificial intelligence (AI) or AI-assisted technologies shall be declared to include the name of the AI tool or service used; (3) the Author Contribution Disclosure, which lists the specific contributions of authors; (4) the Author Publishing Agreement which retains author copyright, grants publishing and distribution rights to JAFES, and allows JAFES to apply and enforce an Attribution-Non-Commercial Creative Commons user license; and (5) the Conversion to Visual Abstracts (*optional for original articles only) to improve dissemination to practitioners and lay readers. Authors are also required to accomplish, sign, and submit the signed ICMJE form for Disclosure of Potential Conflicts of Interest. For original articles, authors are required to submit a scanned copy of the Ethics Review Approval of their research as well as registration in trial registries as appropriate. For manuscripts reporting data from studies involving animals, authors are required to submit a scanned copy of the Institutional Animal Care and Use Committee approval. For Case Reports or Series, and Images in Endocrinology, consent forms, are required for the publication of information about patients; otherwise, appropriate ethical clearance has been obtained from the institutional review board. Articles and any other material published in the JAFES represent the work of the author(s) and should not be construed to reflect the opinions of the Editors or the Publisher.



Experience the new JAFES.
Visit us at www.ASEAN-endocrinejournal.org.